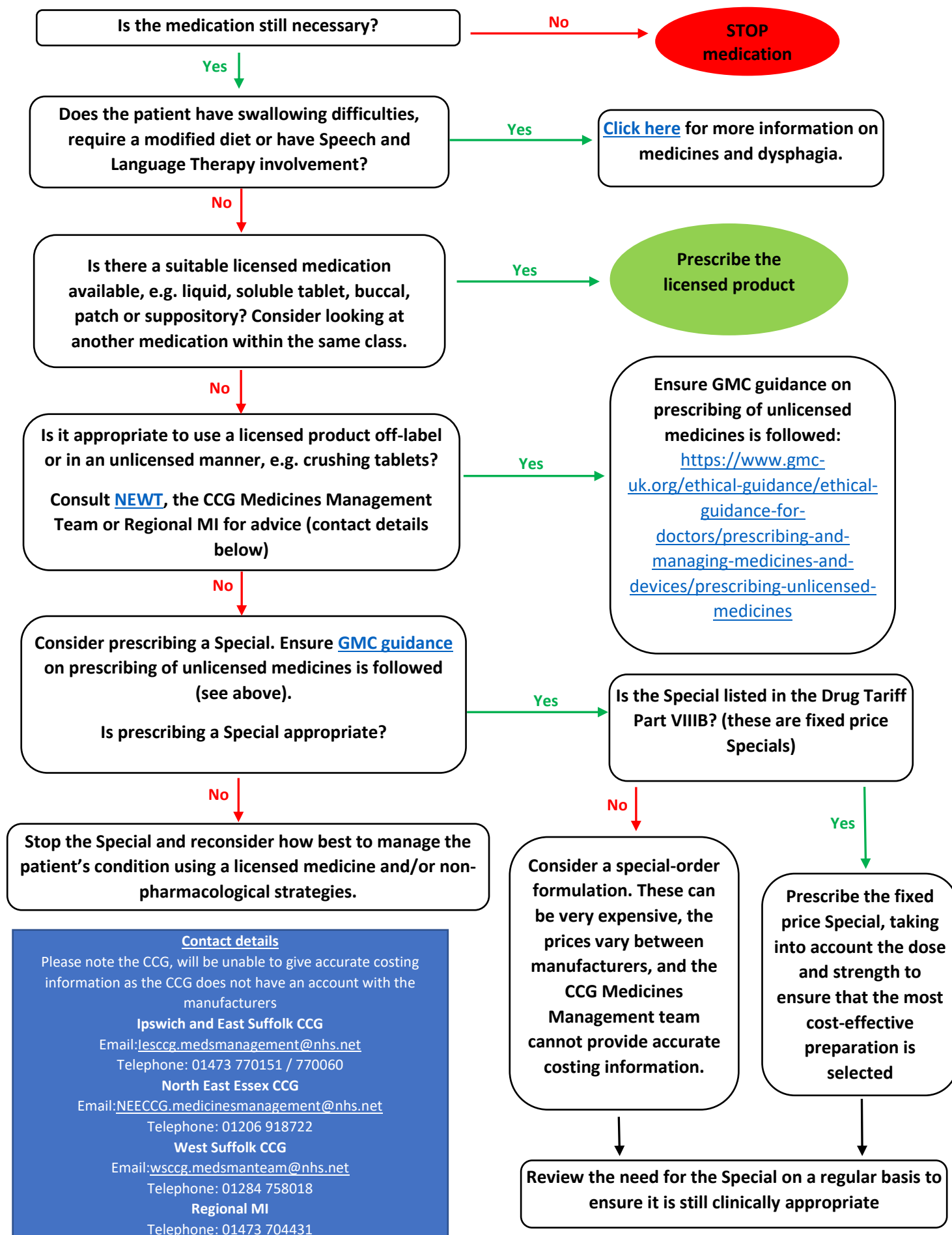


## Decision guide for reviewing a patient on an unlicensed medicine (Special)



**Contact details**

Please note the CCG, will be unable to give accurate costing information as the CCG does not have an account with the manufacturers

**Ipswich and East Suffolk CCG**  
 Email: [iesccg.medsmanagement@nhs.net](mailto:iesccg.medsmanagement@nhs.net)  
 Telephone: 01473 770151 / 770060

**North East Essex CCG**  
 Email: [NEECCG.medicinesmanagement@nhs.net](mailto:NEECCG.medicinesmanagement@nhs.net)  
 Telephone: 01206 918722

**West Suffolk CCG**  
 Email: [wscgg.medsmanteam@nhs.net](mailto:wscgg.medsmanteam@nhs.net)  
 Telephone: 01284 758018

**Regional MI**  
 Telephone: 01473 704431

## Decision guide to prescribing a Special or a medicine used outside the terms of its licence (off-label)

