

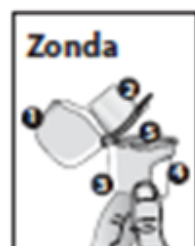
Zonda Instructions for Use

Dear Patient,

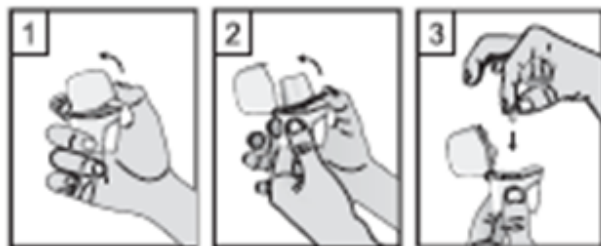
The Zonda inhaler enables you to inhale the medicine contained in the Braltus capsule that your doctor has prescribed for your breathing problems.

Remember to carefully follow your doctor's instructions for using Braltus. The Zonda inhaler is especially designed for Braltus capsules: you must not use it to take any other medication. The capsules must only be inhaled using the Zonda inhaler. Do **not** use any other inhalers to take Braltus capsules. Each capsule contains only a small amount of powder. Do **not** open the capsule or it may not work.

The Zonda inhaler should only be used with the bottle of capsules provided. Do not reuse the inhaler for another bottle of capsules. Discard the Zonda device after 15 uses (if used with a 15 capsule bottle) or 30 uses (if used with a 30 capsule bottle).



1. Dust cap
2. Mouthpiece
3. Base
4. Piercing button
5. Centre chamber

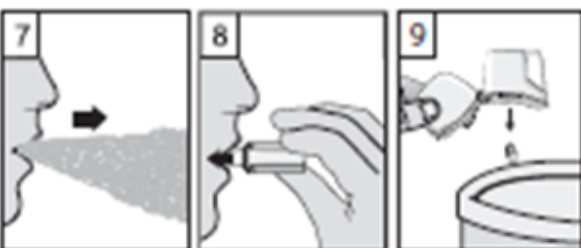


1. Pull the cap upwards.
2. Hold the base of the inhaler firmly and open the mouthpiece by pulling it upwards, in the direction of the arrow.
3. Remove a Braltus capsule from the bottle immediately before use and close the bottle tightly. Place one capsule in the capsule-shaped compartment in the base of the inhaler. Do **not** store the capsule in the Zonda inhaler.

4. **Never** place a capsule directly into the mouthpiece.



5. Close the mouthpiece until you hear a click, leaving the cap open.
6. Hold the inhaler with the mouthpiece upwards, and firmly press the piercing button completely in only once. Release the button. This will pierce the capsule and allows the medication to be released when you breathe in.



7. Breathe out fully. It is important to do this away from the mouthpiece. Avoid breathing into the mouthpiece at any time.
8. Place the mouthpiece in your mouth and keep your head in an upright position. Close your lips around the mouthpiece and breathe in slowly and deeply enough to hear or feel the capsule vibrating inside the compartment. Hold your breathe for as long as you comfortably can whilst taking the inhaler out of your mouth. Then breathe normally. Repeat steps 7 and 8 to empty the capsule completely.
9. After use, open the mouthpiece again, and tip out the empty capsule. Close the mouthpiece and cap, and store your Zonda inhaler.

The Zonda inhaler is a Medical Device (CE)

Manufacturer:

Plastiapè S.p.A.

Via 1 Maggio, 8, 23875 Osnago LC, Italy